

PERSONAL NAVIGATOR

Sunrise: 6:42 a.m. Sunset: 7:39 p.m.

Evening Attire: Cruise Casual

Wednesday: Cloudy High: 75°F/24°C

Thursday: Cloudy High: 72°F/22°C

WEDNESDAY, MAY, 1, 2013


DAY AT SEA

Disney's Believe

Genie from Aladdin and many of Disney's most-beloved magic makers take a father on a magical journey to show him that anything is possible if you just believe.

WALT DISNEY THEATRE

Decks 3 & 4, Forward
6:15 & 8:30 P.M.

 Assistance available at the entrance to the Walt Disney Theatre 30 minutes prior to show time.



Disney DREAM Fun Facts

Tonnage: 129,690

Height: 66.13 m (217 feet)

Length: 339.8 m (1114.7 feet)

Important Dates

Name Announcement: March 2009

Steel Cutting: March 2009

Keel Laying: August 2009

Delivery: December 2010

Did you know?

The Sorcerer Mickey Mouse on the Disney Dream's stern is about 14 feet long. Constructed of stainless steel and fiberglass, it weighs approximately 2,500 pounds.

SEA YA' REAL SOON!

Mickey and some of his Disney friends, invite you to join them in the ship's Atrium. You won't want to miss this very special farewell meet and greet.

Bring your cameras!
4:15 & 10:15 p.m.
Lobby Atrium,
Deck 3, Midship

Don't Miss:

Anyone Can Cook

D Lounge, Deck 4, Midship - 11:00 a.m., Families - Apple Strudel
D Lounge, Deck 4, Midship - 3:00 p.m., Adults - Lobster Ravioli
From our galley to yours; join our chefs as they show you how to prepare some delicious dishes.

Jack-Jack's Incredible Diaper Dash

Lobby Atrium, Deck 3, Midship - 11:30 a.m.

Calling all baby cruisers! The Disney Dream's babies take to the mat to see who's the fastest crawler on the seven seas!

Captain's Signing

Whitecaps, Deck 3, Forward - 12:15 p.m. & 7:15 p.m.
Come and have your Disney Dream merchandise signed by the Master of the Disney Dream, Captain Guus.

80's Music Challenge

Evolution, Deck 4, Aft - 10:30 p.m.

Join your Club Host, Franky, and your Cruise Staff team as they test your 80's music knowledge in this interactive challenge.

Debark Talk Broadcast

Your Cruise Director, Natalie, presents important information, including U.S. Customs and Border Protection procedures. Tune in to Channel 5 of your stateroom TV. Please place your luggage outside your stateroom between 8:30 p.m. - 10:30 p.m.

Thank you in advance for completing your comment card.



Visit The Future Cruise Desk Early Today

Please visit the Future Cruise Desk, Deck 4, Midship, as early as possible today. The last day of the cruise tends to get busy in the evening, and we want to be sure you have the opportunity to save 10% on your next cruise, receive up to a \$200 onboard credit, and pay a reduced deposit! Tune to Channel 8 for details.

DINNER MENU
Animator's Palate: Pacific Rim Cuisine
Enchanted Garden: Continental Market
Royal Palace: French Dinner

DRINK OF THE DAY

High Tide (Alcoholic)
Princess Delight (Non Alcoholic)

IMPORTANT NUMBERS

Fire/Security: 7-3001
Medical Emergency: 7-3000
Health Center: 7-1923

FAMILY ACTIVITY HIGHLIGHTS



WAKE UP WITH DISNEY JUNIOR

D Lounge, Deck 4, Midship - 9:30 a.m.

What happens when you experience unlimited fun with your favorite Disney Junior shows? An exciting dance party designed especially for preschoolers ages seven and under.

FAMILY DREAM QUEST

D Lounge, Deck 4, Midship - 12:30 p.m.

Enjoy the wildest and wackiest scavenger team event on the seven seas!

DISNEY VACATION CLUB GROUP PRESENTATION

Evolution, Deck 4, Aft - 12:30 p.m.

Want to learn more about taking magical vacations year after year? Stop by our interactive group presentation to find out more information from a Disney Vacation Club representative.

DISNEY ANIMATION: CREATING A CHARACTER

D Lounge, Deck 4, Midship - 1:15 p.m.

Go behind the scenes at Walt Disney Animation Studios as Walt Disney himself talks about his most famous characters, then learn the basic techniques of drawing some of your Disney Friends in this fun and interesting enrichment program.

ANIMAL TOWEL FOLDING

D Lounge, Deck 4, Midship - 2:00 p.m.

Join our Housekeeping team as they show you the secrets of transforming an ordinary bath towel into a cute animal.

MICKEY 200

Evolution, Deck 4, Aft - 3:00 p.m.

Does your family have what it takes? Can a carrot and a potato be turned into the fastest hot-rod on the seven seas? Find out in the Mickey 200! Limited availability.

OFFICER PIN TRADING

Lobby Atrium, Deck 3, Midship - 7:30 p.m.

Come trade pins with the officers of the Disney Dream.



ADULT ACTIVITY HIGHLIGHTS



SENSES SPA FITNESS CLASSES & SEMINARS

Body Sculpt Boot Camp - Goofy's Sports Deck - 7:30 a.m.
Wake Up & Stretch Class - Senses Spa & Salon - 8:15 a.m.
Group Cycling (Sign-Up Required) - Senses Spa & Salon - 9:00 a.m.
Detox for Health & Weight Loss - Senses Spa & Salon - 10:00 a.m.
Acupuncture for Your Health and Wellbeing - Senses Spa & Salon - 11:00 a.m.
Good Feet Seminar: Walking in Comfort - Senses Spa & Salon - 12:00 p.m.
Burn Fat Fast - Senses Spa & Salon - 2:00 p.m.
Total Body Conditioning - Senses Spa & Salon - 5:00 p.m.

TASTING CLASSES

Wine Tasting - Pink - 12:15 p.m.

Chocolate & Liquor Tasting - Pink - 1:30 p.m.

Mixology - Skyline - 3:00 p.m.

Tequila & Margarita Tasting - 687 Pub - 3:30 p.m.

Martini Tasting - Meridian - 4:00 p.m.

Please make reservations for tastings at Guest Services for a nominal fee. Tasting Seminars are only for Guests 21 and Older.

LUNCH

Royal Palace, Deck 3, Midship - 12:30 p.m.



JENGA CHALLENGE

687 Pub, Deck 4, Aft - 5:00 p.m.

FAREWELL EVENT

Evolution, Deck 4, Aft - 10:15 p.m.

SINGLES LUNCH

Royal Palace, Deck 3, Midship - 12:15 p.m.

Single, single parent, or travelling alone? Join your Cruise Staff for an informal lunch.

BRAINTEASERS TRIVIA

687 Pub, Deck 4, Aft - 7:30 p.m.

Put your brain to the test as your Club Host, Franky, pushes the limits of your knowledge with some classic Brainteasers. Can you figure them out?

PUB QUIZ CHALLENGE

687 Pub, Deck 4, Aft - 9:45 p.m.

Join Nick for your last installment of our Pub Quiz. Who will be crowned the ultimate Pub Quiz champion?

\$10,000 MEGA JACKPOT BINGO

Buena Vista Theatre, Decks 4 & 5, Midship

Card Sales - 10:45 a.m. Game Starts - 11:00 a.m.

Take home \$10,000 if you can cover your card in 46 numbers or less. If not, we carry on to play for the biggest CASH prize of the session.

FINAL JACKPOT BINGO

**D Lounge,
Deck 4, Midship**

Card Sales - 4:00 p.m.

Game Starts - 4:15 p.m.

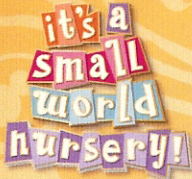
Join your Cruise staff team for our FINAL Session of Bingo! Cash Prize games and the Snowball Jackpot continues to grow and is guaranteed to be won today!



YOUTH ACTIVITIES HIGHLIGHTS

DINE & PLAY

A convenience for families dining at 8:15 p.m., our Youth Activities Counselors will be available at 9:15 p.m. at the entrance of Royal Palace, Enchanted Garden and Animator's Palate dining rooms to bring registered children to join the fun in the Youth Activity areas.



Deck 5 Midship (7-5864) 9:00 a.m. - 12:00 a.m.

OPEN HOUSE

8:00 a.m. - 9:00 a.m.

Your chance to see our toddler space, It's A Small World Nursery.



Deck 5 Midship (7-1440) 10:00 a.m. - 12:00 a.m.
(3-12 years old)

MICKEY'S PUZZLE PLAYTIME

10:15 a.m.

Come and play with Mickey & friends as they share their favorite games, puzzles and dances!

BIG TOP FUN FEST

7:30 p.m.

It's the greatest show on Earth. Come re-discover the circus Disney style with clowns, jugglers and classic Disney cartoons.



Deck 5 Midship (7-1445) 9:00 a.m. - 12:00 a.m.
(3-12 years old)

GET THE HOOK

1:30 p.m.

A villainous villain has stolen Captain Hook's prized golden hook. Become a member of the Top Deck Detective Agency and help solve the clue's to retrieve Hook's hook.

MONSTER'S, INC. OPEN "MIKE" NIGHT

6:15 p.m.

The Monsters of Monstropolis have all lost their voices and it's up to YOU to save the day. Participate in Mike Wazowski's Comedy School and a special show to help collect enough laughs to power up the city.



Deck 13 Midship (7-9743) 10:00 a.m. - 12:00 a.m.
(11-14 years old)

SUPER SLOPPY SCIENCE

11:30 a.m.

Join Professor Make-O-Mess in some of the most extreme experiments you will ever see in the world of Super Sloppy Science!

GHOST VOYAGERS

9:00 p.m.

The ship has come upon some mysterious waters and strange things are afoot. Join a paranormal expert to help investigate the area and track down any evidence of ghostly beings on the ship.



Entrance on Deck 4 Forward (7-9417) 11:00 a.m. - 1:00 a.m.
(14-17 years old)

DREAM FACTOR

3:00 p.m.

Time to see if you are up to the challenge for one of the toughest competitions onboard. Prepare yourself for "Dream Factor."

ZOMBIFIED PREMIERE

11:00 p.m.

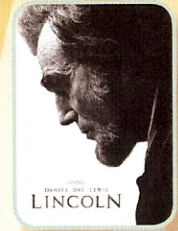
Join the producer to watch the preview of the final version of the film and join us for a celebration party.

BUENA VISTA THEATRE

Today's Movies



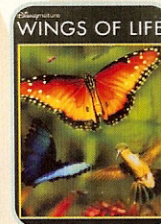
8:30 a.m.
Run Time: 1 hr 52 min
Rating: G



12:30 p.m. - CC
Run Time: 2 hr 30 min
Rating: PG-13



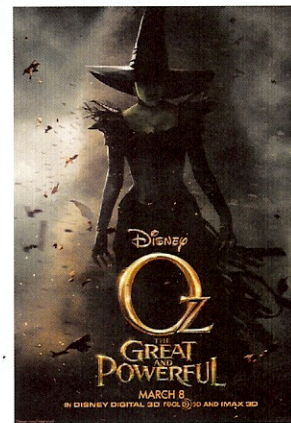
3:30 p.m.
Run Time: 1 hr 53 min
Rating: PG



6:00 p.m. & 8:30 p.m.
Run Time: 1 hr 17 min
Rating: G



10:15 p.m.
Run Time: 2 hr 07 min
Rating: PG



Walt Disney Theatre
Decks 3 & 4, Forward
2:00 p.m.



Find out what's HOT at this fun dance party, featuring great Disney music, family dances!

D Lounge,
Deck 4, Midship
10:15 p.m.

YOUTH ACTIVITIES OPEN HOUSE

Open House is an opportunity for all to come and participate in a variety of exciting activities and free time in the Oceaneer Club, Lab and Edge throughout the cruise. During these times secured programming will still be offered in the other venue for those looking to check their children into care.

Vibe: 10:00 a.m. - 11:00 a.m.
& 7:30 p.m. - 8:30 p.m.

Edge: 9:00 a.m. - 10:00 a.m.
Disney's Oceaneer Club: 9:00 a.m. - 10:00 a.m.

MORE TO ENJOY WHILE ONBOARD



PLAN YOUR NEXT CRUISE

Please visit the Future Cruise Desk, Deck 4, Midship, as early as possible today. We want to be sure you have the opportunity to save 10% on your next cruise, receive up to a \$200 onboard credit, and pay a reduced deposit! Tune to Channel 8 for details.



DISNEY VACATION CLUB® GROUP PREVIEW

Want to learn more about taking magical vacations year after year? Please see a Disney Vacation Club representative on Deck 4, Midship, or call 7-2805 from your stateroom phone for more information about our interactive group presentation.

PROTECT YOUR PURCHASES

Don't forget to activate your 60 day buyer's guarantee form for your purchases in Nassau. It's free and confidential. Pick one up at the Shopping Desk, Deck 4, Midship.



SALON TASTER SPECIAL

Choose from scalp massage, European facial, hand treatment, sunglow make-over, hair treatment, eye-collagen treatment, foot & ankle massage and neck & shoulder massage.

Three for \$99, five for \$119, and eight for \$139.

Senses Spa & Salon, Deck 11, Forward, Ext. 7-1465

DOONEY & BOURKE ON THE DREAM

These stylish bags feature two collections to embody the spirit of Disney Cruise Line's adventures at sea. Our nautical blue and white theme is adorned with the Disney Cruise Line wave logo, while our four ships print features the Disney Cruise Line family of ships, including everyone's favorite pal, Captain Mickey Mouse! There are different shapes, sizes, and styles to fit your needs. Come discover the bag that is right for you.

WHITECAPS
Deck 3, Forward

Shutters GET THE PICTURE

Grand Staircase – Groups accommodated

Lobby Atrium, Deck 3, Midship

5:00 p.m. - 6:30 p.m.

Create a personal storybook of your cruise to share with family and friends.

Photobook orders close at 10:00 p.m.

*Please note that photos are available for viewing on our interactive photo kiosks approximately three hours after being taken and are only available for purchase during this cruise.

EXPRESS WALK-OFF

Guests now have the option to take your luggage off the ship at your leisure once the ship has been cleared by the local authorities. You do not need to wait for your luggage to enter the terminal and there is no need to claim it inside the terminal building. Please note that no assistance with luggage is provided for this option.

MIDSHIP DETECTIVE AGENCY

Use your detective know-how and our special detective "badge" to search the ship and catch your criminal! Deck 5, Midship Kiosks.

SURF @ SEA

\$0.75 per minute, or save money by buying blocks of time. \$27.50 for 50 minutes, \$40 for 100 minutes and \$75 for 250 minutes. Wireless information sheets are available at Guest Services, Deck 3, Midship.

Please note: Due to satellite connectivity, onboard internet service will be noticeably slower than you may be accustomed to and may at times be interrupted or unavailable.

ON DEMAND TV

Watch Disney movies, Hollywood features, ABC Shows, and even captioned content, plus much more "On Demand" for FREE in the comfort of your stateroom! Bookmark your movie and come back to watch it later. Press MENU on your stateroom television remote control and follow the prompts.

SHOPPING

CAPTAIN'S SIGNING

Come to Whitecaps at 12:15 p.m. and 7:15 p.m. to have your Disney Dream merchandise signed by the Master of the Disney Dream, Captain Guus. Stunning replica ships are available in Sea Treasures, Deck 3, Forward.

POOLSIDE SHOPPING

Whozits & Whatzits and Quacks, Starboard Side, are the shopping locations for all of your poolside needs. Four Ships and Itinerary tees available at Quacks. Aquaduck merchandise and name branded sunglasses available at Whozits & Whatzits, Deck 11, Midship.

DISNEY CRUISE LINE 15TH ANNIVERSARY

Happy Anniversary, Disney Cruise Line! To celebrate its 15th year, an array of Disney Cruise Line 15th Anniversary items will be available at Sea Treasures. From pins to graphic tees, you can pick up a commemorative souvenir for the whole family! Deck 3, Forward.

GOING ONCE, GOING TWICE, YOURS!

The silent auction takes place tonight from 6:00 p.m. until 9:00 p.m. Make sure you come place a bid on your favorite pieces. Experience our Disney Pixar collection and see the many other exciting prints and canvas wraps also available for purchase. Own a piece of the Disney Dream with an artistic rendering of your favorite Disney character painted on a Mickey head carved from actual ship metal. Vista Gallery, Deck 4, Midship.

TROPICAL MEMORIES FROM VERA BRADLEY

Celebrate a day at sea in style by visiting White Caps to experience our newly arrived line from Vera Bradley. Bags, shoes, scarves, and accessories in bright floral patterns that will remind you of your Bahamian vacation for years to come. Whitecaps, Deck 3, Forward.

TAX AND DUTY FREE HIGHLIGHT

Any liquor purchases you have made throughout the voyage will be delivered to your stateroom today, packaged safely for your journey home. Experience the fragrances, jewelry and liquors we have onboard at excellent duty free prices tonight as we will not be open in Port Canaveral. Satisfy your sweet tooth with our selection of Godiva chocolate. Whitecaps, Deck 3, Forward.

IMPORTANT INFORMATION

Security Notice

All Guests (including children) who wish to disembark the ship are required to present their Key to the World card at the gangway. A photo ID is also required for those Guests who are 18 years of age or older. Guests under the age of 18 are required to have a Parent, Guardian or other responsible adult sign an authorization form at the time it is given out if they wish to go ashore unaccompanied. Authorization forms are available at the gangways and Guest Services.

Please Note:

Please remember to use plenty of sunscreen and mosquito repellent when venturing ashore.

Cold and Flu Reminder

Please wash hands frequently and thoroughly; particularly before meals. Contact the Health Center by dialing 7-1923, should anyone in your party become ill.

Corridor Quiet Hours

As a courtesy to all our Guests, please recognize quiet hallway hours from 10:00 p.m. til 8:00 a.m.

Inclement Weather

For the safety of all Guests, outdoor events may be changed due to unforeseen weather conditions.

Environmental Message

With Disney's commitment to the Environment, please refrain from throwing anything over the Ship's side. Thank you!

No Reserved Seats Policy

As a courtesy to all our Guests, we kindly advise that the saving of seats is not permitted in the Walt Disney Theatre, and the saving of the sun loungers is not permitted on Deck 11, 12, and 13. Items left unattended will be returned to lost and found at Guest Services, Deck 3 Midship.

Smoking

For the comfort of our guests the following areas are designated as Smoking areas: - Promenade Deck (Deck 4), smoking is permitted Port Side, Aft only from 6:00 p.m. to 6:00 a.m.

- Currents - Deck 13, Forward, Port Side.

- Meridian Bar - Deck 12, Aft, Port Side, outside.

- Smoking is permitted on stateroom verandahs.

Smoking is prohibited inside all guest staterooms. Guests found smoking in their staterooms will be charged a \$250 stateroom recovery fee.

Walt Disney Theatre

Theatrical performances may use artificial fog, strobe lights, pyrotechnics and other special effects. For the safety of our performers and the comfort of those around you, the use of any photography, video recording device or any electronic equipment is prohibited.

Verandah Safety

Please do not leave any combustible materials on your balcony when not present in your stateroom for safety reasons.

DD/NB/4D/232/04.28.2013/EMP/©DISNEY

WEDNESDAY, MAY 1, 2013 - DAY AT SEA

BUENA VISTA THEATRE



8:30 a.m.
Run Time: 1 hr 53 min
Rating: G



12:30 p.m. - **PG**
Run Time: 2 hr 30 min
Rating: PG-13



3:30 p.m.
Run Time: 1 hr 53 min
Rating: PG



6:00 p.m. & 8:30 p.m.
Run Time: 1 hr 17 min
Rating: G



10:15 p.m.
Run Time: 2 hr 07 min
Rating: PG

Character Appearances

PRINCESS GATHERING
Lobby Atrium - 9:00 a.m.

TINKER BELL
Lobby Atrium - 9:30 a.m.

PRINCESS MINNIE
Deck 4, Balcony - 9:30 a.m.

DONALD DUCK
Preludes - 10:30 a.m.

CHARACTER DANCE PARTY
Lobby Atrium - 12:15 p.m.

MICKEY & PLUTO
Deck 4, Balcony - 2:15 p.m.

GOOFY & MAX
Lobby Atrium - 2:15 p.m.

CHIP & DALE
Lobby Atrium - 2:30 p.m.

SEA YA REAL SOON
Lobby Atrium
4:15 p.m. & 10:15 p.m.

PLUTO
Preludes - 5:15 p.m.

MICKEY MOUSE
Deck 4, Balcony
5:15 p.m. & 7:30 p.m.

GOOFY
Preludes - 5:45 p.m.

MINNIE MOUSE
Lobby Atrium - 7:30 p.m.

DISNEY PRINCESSES
D Lounge - 7:30 p.m.



For details of daily Disney character appearances, refer to the character line on your Navigator Grid, or the digital character board in the Lobby Atrium.

YOUTH ACTIVITIES THEMED EXPERIENCES

CLUBHOUSE SERIES
focuses on movement and features content which appeals to younger children.

STORYBOOK SERIES
is designed with a strong connection to the Disney classic stories.

JUMP UP! SERIES
includes large group games & movement-oriented activities.

CREATE & INVENT SERIES
will have a tactile focus allowing children to create and admire their work.

WIN THE SPOTLIGHT SERIES
focuses on children's stage presence with lots of activities and enthusiasm.

SCOLVE IT! SERIES
children with problem/solutions-based activities.

OPEN HOUSE

Activities for families, adults and children of all ages to enjoy together.

SHIP DIRECTORY

YOUTH ACTIVITIES

DISNEY'S OCEANEER CLUB DECK 5, Mid 10:00 A.M. - 12:00 A.M.
DISNEY'S OCEANEER LAB DECK 5, Mid 9:00 A.M. - 12:00 A.M.
EDGE DECK 13, MID 10:00 A.M. - 12:00 A.M.
VIBE DECK 4, FWD 11:00 A.M. - 1:00 A.M.
IT'S A SMALL WORLD NURSERY DECK 5, Mid 9:00 A.M. - 12:00 A.M.

RECREATION

AQUADUCK DECK 12, MID 9:00 A.M. - 11:00 P.M.
GOOFY'S SPORTS DECK DECK 13, AFT 12:00 A.M. - 6:00 P.M.
DONALD'S POOL DECK 11, MID 6:00 A.M. - 12:00 A.M.
SPORTS/GOLF SIMULATORS DECK 13, AFT 9:00 A.M. - 6:00 P.M.
GOOFY & MAX'S MINI GOLF DECK 13, AFT 8:00 A.M. - 10:00 P.M.
MICKEY'S POOL DECK 11, MID 6:00 A.M. - 12:00 P.M.
MICKEY'S SLIDE DECK 11, MID 9:00 A.M. - 6:00 P.M.
MIDSHIP DETECTIVE AGENCY DECK 5, Mid 8:00 A.M. - 11:00 P.M.
NEMO'S REEF DECK 11, MID 9:00 A.M. - 6:00 P.M.
QUIET COVE POOL DECK 11, FWD 6:00 A.M. - 12:00 A.M.
SENSES FITNESS CENTER DECK 11, FWD 6:00 A.M. - 10:00 P.M.

GENERAL INFORMATION

ARR-CADE DECK 11, AFT 24 Hours
BUENA VISTA THEATRE DECK 4 & 5, Mid SHOWTIMES
DISNEY VACATION CLUB DECK 4, Mid 9:00 A.M. - 12:00 P.M.
FUTURE CRUISE SALES DESK DECK 4, Mid 2:30 P.M. - 10:00 P.M.
GUEST SERVICES DECK 3, Mid 9:00 A.M. - 12:00 P.M.
HAIR BRAIDING DECK 11, AFT 2:30 P.M. - 6:00 P.M.
MEDICAL HEALTH CENTER DECK 1, FWD 7:00 P.M. - 10:30 P.M.
PRELUDES DECK 3, Fwd 24 Hours
SENSES SPA AND SALON DECK 11, FWD 8:00 A.M. - 9:30 P.M.
SHUTTERS PHOTO GALLERY DECK 4, Mid 4:30 P.M. - 7:00 P.M.
WALT DISNEY THEATRE DECKS 3 & 4, FWD 8:00 P.M. - 8:45 P.M.
SHOWTIMES 10:00 A.M. - 11:00 P.M.

SHOPPING

MICKY'S MAINSAIL DECK 3, FWD 9:00 A.M. - 11:30 P.M.
WHITE CAPS DECK 3, FWD 9:00 A.M. - 11:30 P.M.
SEA TREASURES DECK 3, FWD 9:00 A.M. - 11:30 P.M.
VISTA GALLERY DECK 4, Mid 10:00 A.M. - 11:00 P.M.
WHOZITS & WHAZITS DECK 11, Mid 10:00 A.M. - 4:00 P.M.
QUACKS (STARBOARD SIDE) DECK 11, Mid 7:00 P.M. - 10:00 P.M.
10:00 A.M. - 3:00 P.M.

IMPORTANT NUMBERS

Fire/Security: 7-3001
Medical Emergency: 7-3000
Health Center: 7-1923

DINING & LOUNGES

BREAKFAST

CABANAS CONTINENTAL(PORT SIDE) DECK 11, AFT 7:00 A.M. - 7:30 A.M.
CABANAS DECK 11, AFT 7:30 A.M. - 11:30 A.M.
ENCHANTED GARDEN DECK 2, MID 9:00 A.M. - 10:30 A.M.
ROYAL PALACE DECK 3, MID 8:00 A.M. - 9:30 A.M.

LUNCH

CABANAS DECK 11, AFT 12:00 P.M. - 2:00 P.M.
ENCHANTED GARDEN DECK 2, MID 12:00 P.M. - 1:30 P.M.
FILMORE'S FAVORITES DECK 11, MID 11:00 A.M. - 6:00 P.M.
LUIGI'S PIZZERIA DECK 11, MID 11:00 A.M. - 6:00 P.M.
ROYAL PALACE DECK 3, MID 12:00 P.M. - 1:30 P.M.
TOW MATER'S GRILL DECK 11, MID 11:00 A.M. - 6:00 P.M.

DINNER

ANIMATOR'S PALATE DECK 3, AFT 5:45 P.M. & 8:15 P.M.
ENCHANTED GARDEN DECK 2, MID 5:45 P.M. & 8:15 P.M.
ROYAL PALACE DECK 3, MID 5:45 P.M. & 8:15 P.M.
PALO & REMY (18+) DECK 12, AFT 6:00 P.M. - 9:00 P.M.
(RESERVATION REQUIRED & COVER CHARGE APPLICABLE. DIAL #7-9734)
TOW MATER'S GRILL DECK 11, MID 6:00 P.M. - 11:00 P.M.

LATE NIGHT SNACKS

LUIGI'S PIZZERIA DECK 11, Mid 9:30 P.M. - 12:00 A.M.

ADDED FEATURES

BEVERAGE STATION DECK 11, AFT 24 HOURS
EYE SCREAM DECK 11, Mid 11:00 A.M. - 12:00 A.M.
ROOM SERVICE DIAL 0 CLOSING AT 1:30 A.M.

ENTERTAINMENT - LOUNGES - BARS

Adults must be 21 and older to consume alcoholic beverages.

687 PUB DECK 4, AFT 11:00 A.M. - 9:00 P.M.
687 PUB (18+) DECK 4, AFT 9:00 P.M. - 12:30 A.M.
BON VOYAGE DECK 3, Mid 9:00 A.M. - 11:00 P.M.
COVE BAR (18+) DECK 11, FWD 9:30 A.M. - 10:30 P.M.
COVE CAFE (18+) DECK 11, FWD 7:00 A.M. - 12:00 A.M.
CURRENTS DECK 13, FWD 10:00 A.M. - 11:00 P.M.
D LOUNGE DECK 4, Mid SHOWTIMES
DISTRICT LOUNGE DECK 4, AFT 10:30 A.M. - 9:00 P.M.
DISTRICT LOUNGE (18+) DECK 4, AFT 9:00 P.M. - 12:00 A.M.
EVOLUTION (18+) DECK 4, AFT 10:15 P.M. - 2:00 A.M.
FROZONIE TREATS DECK 11, Mid 10:00 A.M. - 11:00 P.M.
MERIDIAN (18+) DECK 12, AFT 10:00 A.M. - 12:00 A.M.
OUTLOOK DECK 14, Mid SUNSET TIMES
PINK (18+) DECK 4, AFT 5:00 P.M. - 12:00 A.M.
SKYLINE (18+) DECK 4, AFT 5:00 P.M. - 12:00 A.M.
VISTA CAFE DECK 4, Mid 7:30 A.M. - 11:00 P.M.
WAVES DECK 12, AFT 10:00 A.M. - 7:00 P.M.

Consumers who order raw or partially cooked, ready-to-eat food of animal origin, are hereby informed that the food is not sufficiently cooked to ensure its safety.

PRINCESS GATHERING
Don't miss your chance to see this Royal gathering today in the Lobby Atrium.
9:00 a.m.



CHARACTER DANCE PARTY
Put your dancing shoes on and join some of your favorite Disney Friends in the Lobby Atrium, Deck 3, Midship for fun and dancing.
12:15 p.m.